

ASHLAND HISTORICAL SOCIETY
 Saline Ford Historical Preservation Society
www.AshlandHistoricalSociety.org
 207 North 15th Street, Ashland NE 68003

FALL 2018 NEWSLETTER

Preserving , recording and "sharing & telling" the rich history
 of the Ashland NE community and area

Ashland Nebraska was founded in 1857.

The name ASHLAND is credited to an ardent admirer of Henry Clay who was
 "charmed by the natural beauty of the scenery and its seeming advantage
 of becoming a future city." Clay's home, Ashland KY, was honored.

GENERAL MEMBERSHIP & ANNUAL MEETING

AHS - SFHPS meetings are held quarterly on the second Sunday afternoon of January, April,
 July and October; the Annual Meeting held in October. **The 2018 Annual Meeting** and
 election of officers for the year of **2018 - 2019** will be held **Sunday afternoon October 14,**
2018 - 3 : 00 PM at the **Ashland History Museum**, 207 N. 15th Street, Ashland NE



2017—2018 OFFICERS

President — Martha 'Marti' Fritzen
 Vice President — Peg Lutton
 Secretary — Judy Hull
 Treasurer — Marilyn Wright
 Board Member - Jim Anderson, Jim Sanders
 Jerry and Patti Schofield, Jerry Froistad, and
 Deb Busing-Fletcher
 IT / Web Services - Rodge Bratt

**AHS - SFHPS Reports . . .
 HISTORIC TOURS of ASHLAND**

Historic walking/driving tour maps of Ashland are
 available at Willow Point Gallery, Cooper Studio
 and Gallery and St. Stephen's Church.

The maps show 24 historic sites which are
 identified by signs in place from spring to fall.

**If you have historic items or memories to
 share, do bring them to our meetings.**

**We invite you to share them via our new
 electronic 'Window to the World'.
www.AshlandHistoricalSociety.org**

You may scan & e-mail them to the **Web Geek:**
AshlandHistoricalSociety@gmail.com

We invite you to submit **^ your e-mail address**
 for inclusion in the receipt of **Newsletters**
 and other **Special Events** the **[AHS]** and the
[AHM] will be announcing throughout the year.

This effort has preserved needed funds for
 our museum, etc. by reducing printing & mailing
 expenses. **We Thank You for your efforts.**

'Ashland Historical Society-Ashland NE'
 also has a **Facebook** page for your viewing.

MEMBERSHIP DUES: Individual \$20
 Family - \$35 - Patron - \$75
 Annual Dues are payable on Oct 1st.
A New Member Application
 is a part of this Newsletter.

Renewal Membership Dues are due prior to
 the Annual Meeting, however, will be
 accepted at that time and may be mailed to the
 offices at the **Ashland History Museum**.
 The **[AHM]** is located in the former Ashland
(Carnegie) Public Library building [circa 1911]

JOIN US for the AHS Annual 'Cemetery Crawl' at 2:00 PM @ Ashland Cemetery.
Meet at the 'kiosk', tour select areas & adjourn to AHM for our annual meeting.
ALL persons interested in the history & historical preservation of the Ashland area are
 cordially invited to attend our **Annual Meeting** at **3:00 PM at Ashland History Museum.**

ANNUAL DUES are DUE (01 OCT) * NEW Members are invited

See Details of Membership / Renewal to the left of page
DUES are payable at Annual Meeting
Membership is from JAN 1st to DEC 31st, Annually

It has been another busy year at the **Ashland History Museum**.

Last October **Sue Brauckmuller** started off our year with a walk in the old cemetery
 to visit graves of early settlers before our annual meeting.

On October 14 this year she will lead us to Korean veterans' graves.

On November 11 we participated in the **Ashland Business Expo** held in the Ashland
 Greenwood High School auditorium. In December **Marilyn Wright** decorated a Christ-
 mas tree with early postcards at the Christmas on the Prairie held at the **Saunders**
County Museum in Wahoo.

Pat Yardley again cooked up a storm for the soup and pie lunch held after church on
 Sunday, January 21. We appreciate Pat's volunteering to raise funds for the Museum.
Tom Bassett, appraiser, presented our April 22 meeting at the ACRC building, apprais-
 ing many interesting articles brought in by members and friends of the Historical Soci-
 ety.

Our **THIRD** annual **Lunch on the Lawn** was held on the Museum lawn July 21 after the
Stir-up Parade. The weather cooperated again – no rain and good shade under the
 old museum trees. **Pat Yardley** has a faithful following for her specialties and there
 were no left-overs. **The Farmers and Merchants Bank** again assisted by providing
 tables and chairs. **The Museum** was open from noon until 2 p.m. for tours during the
 downtown car show on Sunday - where 409 cars were displayed!

2018 - A BUSY YEAR FOR THE ASHLAND HISTORICAL SOCIETY Continued:



It has been over 3 years since the Museum opened its doors to the public in 2016.

Pat Yardley has been our #1 volunteer by providing food for a soup luncheon at the VFW in January and the **"3rd Annual Lunch on the Lawn"** at the Museum during the Stir-up.

The proceeds have helped provide funds to pay our yearly rent to City Hall.



The Ashland History Museum [AHM] 3rd annual 'Lunch on The Lawn' was held during 2018 Stir-Up Days. We THANK all Ashlander's for making it such a success. We want to thank Farmers & Merchants Bank for their assistance and co-sponsorship of the luncheon.

The Museum was open for tours after **Lunch on the Lawn** and during the annual car show at the **Stir-up**. We are open Thursdays year round and often give tours at that time. We have had donations of a trophy case from the school, one of the Silver Street drinking fountains, and many pictures and scrapbooks. Thanks to all for your donations. **SPECIAL GROUP TOURS** may be requested via e-mail to address on the previous page.

2018 activities continued

The Saunders County Museum has a noon hour **Lunch and Learn session** once a month and asked the Historical Society to present a brief history of Ashland. On August 23, the panel of **Marilyn Wright, Judy Hull, and Peg Lutton** assisted by **Suzi Nelson** presented the panel they had done for the **Ashland Sesquicentennial** last year using the slide show prepared by **Shirley Niemeyer**.

The Ashland Historical Society is a member of the **Nebraska Museum Association** and **Peg Lutton** attended the annual meeting in North Platte April 9 and 10. Next year's meeting will be in Omaha and we anticipate more of our members will be able to attend.

Patti Schofield leads tours of the Museum and on July 11 hosted a tour for the **Lincoln Little Kingdom** summer school group. **Patti and husband Jerry** have good stories of early days in Ashland.

An important addition to the Museum was the large bulletin board **Jerry Froistad** built for our Railroad information.

Another addition is the 45"x54" portrait of **Geraldine Arnold** donated by her great grandchildren. **Nancy and Don Bliss** stopped on June 17 to visit Ashland and see the portrait of their ancestor. **George Mink** had done Arnold family research as he lived on the farm they had homesteaded south of Ashland and was able to give them information he had researched.

An interesting donation by **Marie Lutz** was the sorting boxes from the Post Office which she had received from **Carl and Edna Anderson**.

Our Historic Ashland Tour Maps are available at the **Gift Niche, Willow Point Gallery and the Gazette Office**.

They provide a walking tour of Ashland with 24 points of interest indicated by historical signs put out in the spring and taken up in the fall. "The First 150 Years of Ashland History" and "Main Streets Remembered" books are also available at the **Ashland History Museum, the Ashland Gazette office, Willow Point Gallery and the Gift Niche**.

I / We wish to RENEW or JOIN the Ashland Historical Society Membership is ANNUAL and is due on or before each January 1st

Please complete the information below;

Please renew / enroll my / our membership in the Ashland Historical Society for 2018 - 2019 as indicated below:

Patron \$75.00 _____ Family \$35.00 _____ Single \$20.00 _____

Enclosed is my check made out to the Ashland Historical Society in the amount of \$ _____ for Renewal / Membership

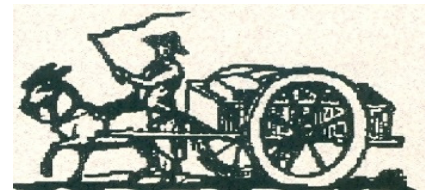
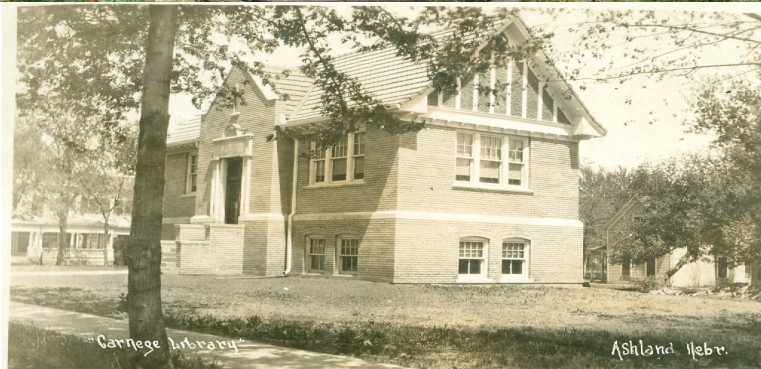
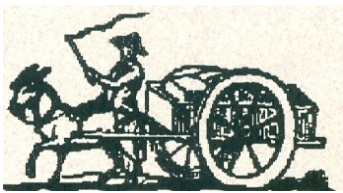
Name: _____

Address: _____

Phone: _____ **E-mail Address** _____

Enclose your check or M.O. in the amount, describing the Membership level you desire

Mail to: AHS, 207 North 15th Street, Ashland NE 68003



Ashland Carnegie Public Library [circa 1913 postcard]
Notice the Wiggenhorn Mansion in the left corner.

Ashland Historical Society
Saline Ford Historical Preservation Society
AHS - SFHPS NEWSLETTER - FALL 2018
AHS - SFHPS Treasurer - Marilyn Wright
207 North 15th Street - Ashland History Museum
Ashland NE 68003